



Most Nuclear Power Plants in Germany have been supplied by Rico with cable routes and also installed

**KNOW-HOW
YOU CAN
RELY ON**



**NPP ISAR 1+2
NPP Gundremmingen
NPP Grafenrheinfeld
NPP Philippsburg 1+2
NPP Neckarwestheim 1+2
THTR Schmelhausen
NPP Krümmel
BTR Kalkar
NPP Biblis
NPP Grohnde
NPP Obrigheim
Nuclear waste repository Gorleben
MOX Hanau
UEG Gronau, Urenco**



Isar 1 + 2 - Germany

**KNOW-HOW
YOU CAN
RELY ON**





Gundremmingen - Germany

**KNOW-HOW
YOU CAN
RELY ON**





Grafenrheinfeld - Germany

**KNOW-HOW
YOU CAN
RELY ON**





Biblis- Germany

**KNOW-HOW
YOU CAN
RELY ON**





Grohnde - Germany

**KNOW-HOW
YOU CAN
RELY ON**





Obrigheim - Germany

**KNOW-HOW
YOU CAN
RELY ON**





Neckarwestheim - Germany

**KNOW-HOW
YOU CAN
RELY ON**





Philippsburg 1 + 2 - Germany

**KNOW-HOW
YOU CAN
RELY ON**





Krümmel - Germany

**KNOW-HOW
YOU CAN
RELY ON**





Kalkar - Germany

**KNOW-HOW
YOU CAN
RELY ON**





Deposit for nuclear rods at Gorleben - Germany

**KNOW-HOW
YOU CAN
RELY ON**





Fabrication of fresh fuel elements at Hanau - Germany

**KNOW-HOW
YOU CAN
RELY ON**





NPP's world-wide with Rico cable trays

**KNOW-HOW
YOU CAN
RELY ON**



Belgium, NPP Doel 4
Brazil, NPP Angra 2
Iran, NPP Buser 1+2
Argentina, NPP Atucha 1+2
Sweden, NPP Oskarshamn 1+2
Switzerland, NPP Beznau 1+2
Finland, NPP Olkiluoto 3



Doel 4 - Belgium

**KNOW-HOW
YOU CAN
RELY ON**





Beznau - Switzerland

**KNOW-HOW
YOU CAN
RELY ON**





Olkiluoto - Finland

**KNOW-HOW
YOU CAN
RELY ON**





Oskarshamn - Sweden

**KNOW-HOW
YOU CAN
RELY ON**





Angra 2 - Brazil

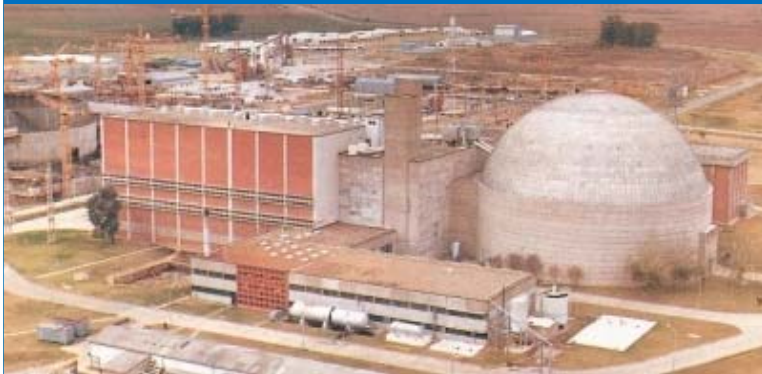
**KNOW-HOW
YOU CAN
RELY ON**





Atucha 2 – Argentina

**KNOW-HOW
YOU CAN
RELY ON**

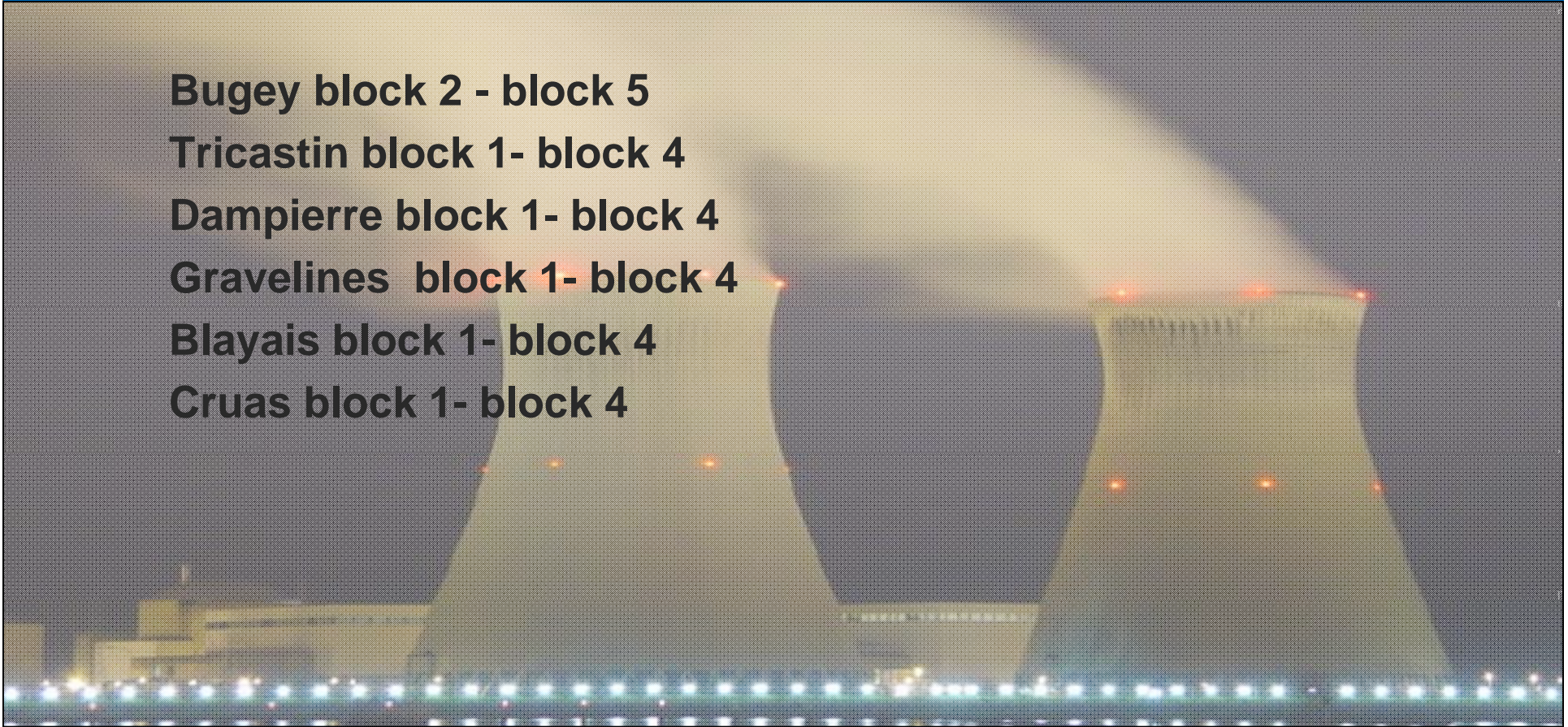




NPP's in France have been supplied with Rico cable trays

**KNOW-HOW
YOU CAN
RELY ON**

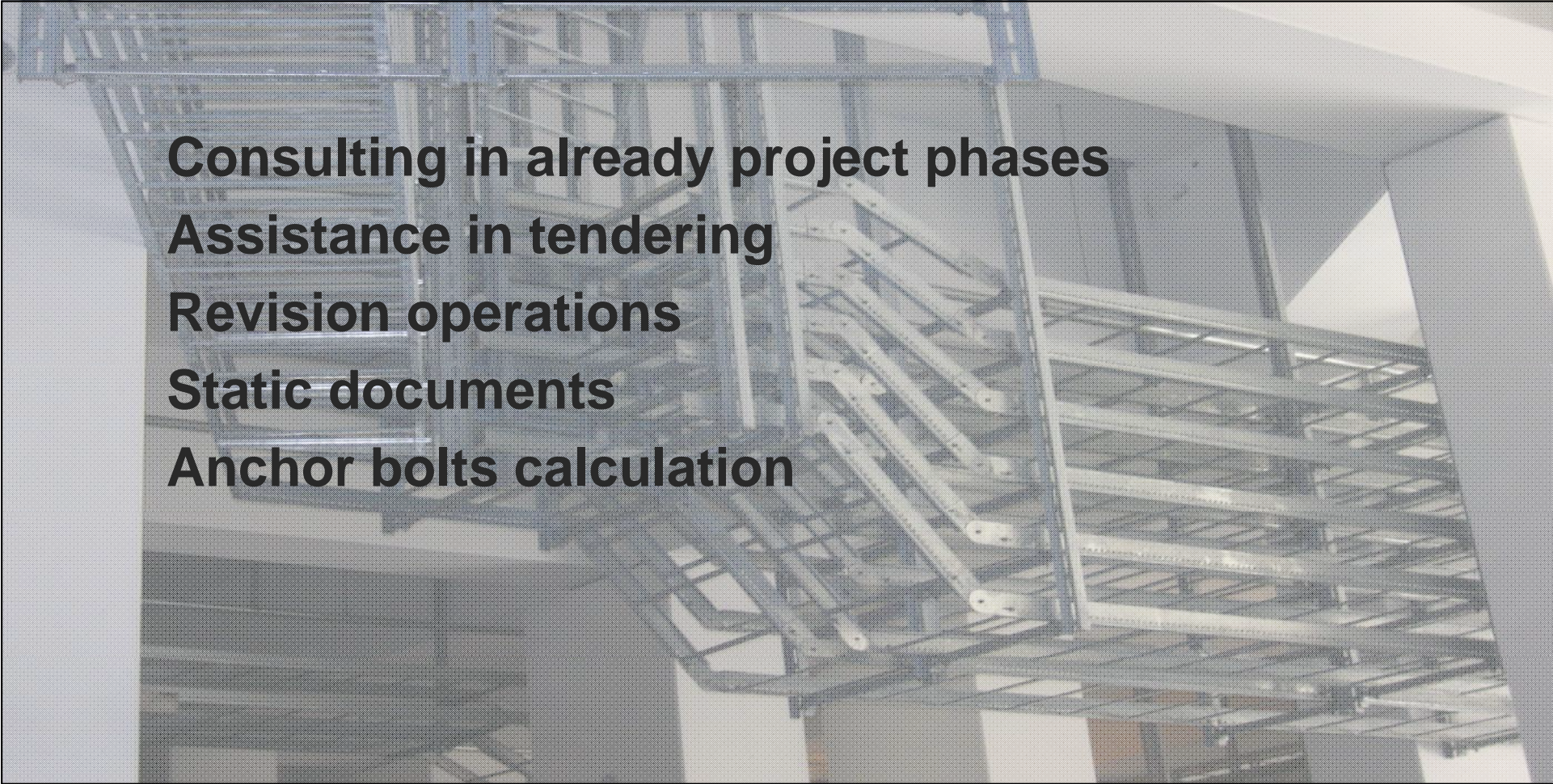
**Bugey block 2 - block 5
Tricastin block 1- block 4
Dampierre block 1- block 4
Gravelines block 1- block 4
Blayais block 1- block 4
Cruas block 1- block 4**





RICO-Engineering

**KNOW-HOW
YOU CAN
RELY ON**

A grayscale photograph of a complex steel truss structure under construction, showing various beams and supports. The image is semi-transparent, allowing the text to be overlaid.

**Consulting in already project phases
Assistance in tendering
Revision operations
Static documents
Anchor bolts calculation**



numerous special solutions, special molded components and custom-made constructions meet the requirements of the customer

**KNOW-HOW
YOU CAN
RELY ON**





Rico cable trays

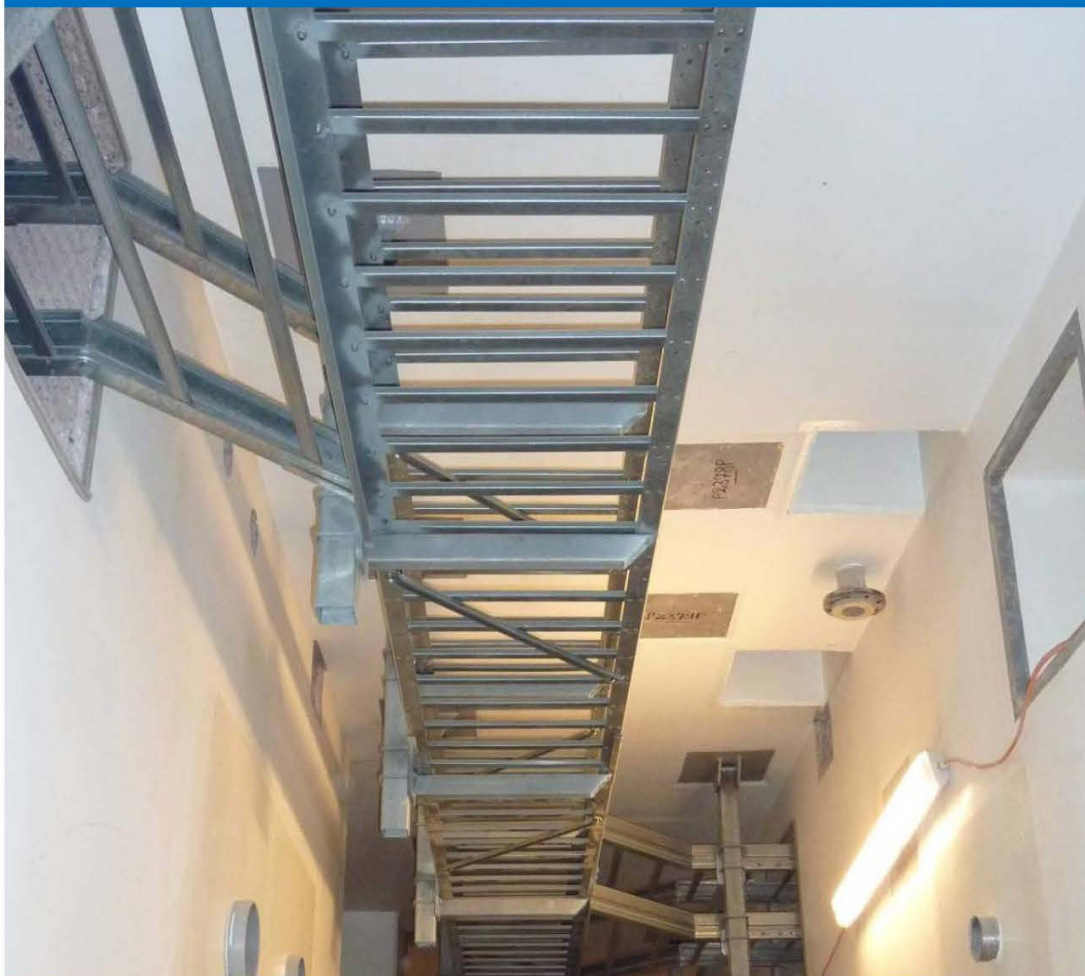
**KNOW-HOW
YOU CAN
RELY ON**





Rico constructions in Nuclear power plants

**KNOW-HOW
YOU CAN
RELY ON**





Rico constructions in Nuclear power plants

**KNOW-HOW
YOU CAN
RELY ON**





Rico constructions in Nuclear power plants

**KNOW-HOW
YOU CAN
RELY ON**

